

Along the LINE

FEBRUARY 2025

For members of
Edgecombe-Martin County EMC



Join us for the 88th Annual Meeting of Members

Edgecombe-Martin County EMC invites members to our 88th Annual Meeting, Thursday, March 27, at the cooperative from 11 a.m. until 6 p.m.

The Annual Meeting of Members serves as an opportunity to share important updates with our members, including information about state and national issues impacting the co-op, as well as a review of the previous year's financial performance and our outlook for the year ahead.

For the past four years, Edgecombe-Martin County EMC has embraced a drive-through format for the Annual Meeting, a change initially prompted by the COVID-19 pandemic. This shift has allowed us to continue engaging with our members in a safe, efficient way, and your feedback and participation

have shown your appreciation for this more convenient approach.

This year, we will once again host the meeting in a drive-through format from 11 a.m. to 6 p.m., with the business meeting taking place at 6 p.m. in our main office lobby.

Members can enter through the receiving entrance, where they will be able to submit their ballots. By doing so, you'll also be entered into our prize drawing—no need to be present to win!

We look forward to seeing you and thank you for your continued support.



**Ronald
McDonald
House®**
Eastern North Carolina

You can make an impact at the Ronald McDonald House of Eastern North Carolina by donating items on the House's wish list at our Annual Meeting.

Please remember the House is just like your home and can use many of the same items you use each day.

For the health and safety of House guests and volunteers, items should be new. Due to stringent health codes, please do not forget to check expiration dates.

Listed below are the most needed items at the Ronald McDonald House of Eastern North Carolina:

- **Kid-Friendly Cereals**
- **Pudding/Fruit Cups**
- **Oatmeal/Grits Packets**
- **Individual Chips/Snacks**
- **Cooking Oil/Spray**
- **Canned Meats**
- **Sugar**
- **Brownie/Muffin Mix**

Welcome Amanda to our Team

In December, Amanda Smith became the newest member of the Edgecombe-Martin County EMC team, joining us as an Administrative Assistant.

In this role, Amanda will be performing a variety of administrative support functions for all departments. Her responsibilities include coordinating employee and director training, preparing and documenting written correspondence, creating business forms and managing reports such as month-end, quarterly, and annual summaries. She also ensures correspondence is efficiently distributed throughout the co-op.

Amanda is currently a senior at North Carolina Wesleyan University, where she is pursuing her bachelor's degree in Business Administration. In her free time, she enjoys cooking, reading, traveling, relaxing at the beach, cheering on UNC basketball and spending quality time with her family.

Amanda also gives back to the community by volunteering as a youth soccer coach in Tarboro and Rocky Mount. We're excited to have Amanda on board and look forward to the contributions she will bring to our team!



Middle Schoolers: Apply for a Touchstone Energy Sports Camp Scholarship to Attend Basketball Camp this Summer!

Edgecombe-Martin County EMC is now accepting applications for scholarships to attend basketball camps at two North Carolina universities this summer.

Young men can apply for a scholarship to attend the Carolina Basketball Camp which will be held June 25-28 at the University of North Carolina at Chapel Hill. Young women can apply for a spot at the Wolfpack Women's Basketball Camp which will be held June 15-18 at NC State University in Raleigh.

The scholarships cover all expenses at the overnight camps, which provide a glimpse into life on a college campus. Campers stay overnight in dorms, learn fundamental skills that will help them excel on and off the court and receive individual and group instruction from Division 1 coaches to enhance their basketball and team-building abilities.



Touchstone Energy®
**Sports Camp
Scholarships**

To apply, students must be a sixth or seventh grade student during the 2025-2026 school year. The application opens this month, and must be submitted by March 31. To learn more and apply, visit neclectriccooperatives.com/sports-camps.



We’ve all experienced it—one moment, you’re going about your day, and the next, the power goes out. You might think, “The weather’s fine, so what could be the cause?”

Believe it or not, there are many reasons for power outages beyond just bad weather. From animals to car accidents or farming equipment, a variety of factors can disrupt your electricity. Let’s take a closer look at the common causes of outages and their impact on us in 2024:

Weather

Weather events are the leading cause of power outages. High winds, lightning strikes, snow, and ice can cause significant damage to electrical equipment. Two major contributors—weather and vegetation—often go hand in hand. Wind, rain, snow, and ice frequently bring down trees or branches onto power lines, causing interruptions. Last year, weather-related incidents accounted for 163 outages, making up 40% of the total outages in 2024.

Equipment and Maintenance

While we proactively service and upgrade our infrastructure, occasional equipment failures still occur. Aging equipment or unforeseen malfunctions can lead to interruptions. Additionally, planned outages for repairs and upgrades are necessary to ensure long-term system reliability. In 2024, equipment-related issues accounted for 56 outages, representing 14% of our total disruptions. These efforts, while sometimes inconvenient, are critical to maintaining dependable service.

Animals

Surprisingly, animals can pose significant challenges to our electrical system. Wildlife such as squirrels, raccoons, and birds often interact with our equipment,

sometimes causing faults. Despite our efforts to install bird guards and other deterrents, some determined animals still manage to create disruptions. Snakes climbing poles have also been known to cause issues. In 2024, animal-related incidents accounted for 63 outages, making up 15% of our total disruptions.

Public

Human activity is another contributing factor to power outages. Vehicle accidents, farm equipment mishaps, theft of cooperative equipment, and even aircraft incidents have caused disruptions. In 2024, public-related incidents accounted for 43 outages, or 10% of the total. These included 16 vehicle accidents that damaged poles, one aircraft-related incident, and 6 outages caused by farm equipment.

Moving Forward

Understanding the causes of power outages helps shed light on what might be affecting your service. If you see our trucks drive past your house, they’re not ignoring you—they’re looking for the source of the issue. Once identified, our crews prioritize restoring power to the largest number of members as quickly and safely as possible. At Edgecombe-Martin County EMC, our mission remains clear: to deliver safe, affordable, and reliable electricity 24/7, every day of the year.

Cooperatively,

Mike Johnson
Mike Johnson

Stay Connected with Your Co-op

Keeping your contact information up-to-date is essential to staying informed.

If you’ve recently moved, changed your email address, updated your cell phone number, or haven’t reviewed your information with us in a while, now is the time to make sure we have your current details.

As of last month, Edgecombe-Martin County EMC can now communicate with members via text to share important reminders and updates about events or other critical information. However, outdated contact details may prevent you from receiving these notifications.

Don’t miss out! Visit ememc.com, navigate to Member Resources, and select the Update Contact Information tab, or call one of our Member Service Specialists at 252-823-2171 to update your information today. Stay connected and stay informed!

Last Call for First Responder and Farm Safety Training

Edgecombe-Martin County EMC's annual First Responder and Farm Safety Training is just around the corner! Set for Tuesday, Feb. 25, at 6 p.m., this event promises vital knowledge for first responders and farmers who regularly encounter electrical hazards.

The training will cover essential safety topics, including managing downed power lines, avoiding electrical accidents with farm equipment, and safely responding to energized equipment. Interactive high-voltage demonstrations and practical strategies will ensure attendees leave with tools they can apply immediately in their work.

This consolidated approach brings first responders and farmers together in a collaborative setting to promote a community-wide commitment to safety. Plus, participants will enjoy a free dinner and earn training hour certificates!

Don't miss out—there's still time to sign up! RSVP by contacting Monica Speight at 252-641-9502 or monicas@ememc.com. Let us know how many will attend by Friday, Feb. 14.

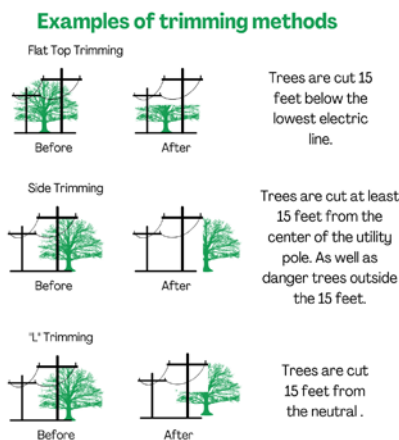
Make safety a priority—sign up today!



February Rights-of-Way Schedule

In order to provide safe, affordable, and reliable electrical service, we maintain the rights-of-way under and around our power lines. Maintaining these rights-of-way is critical to prevent vegetation from interrupting service. Our vegetation management efforts include pruning, brush cutting, and removing trees and other growth that could pose a risk to the system. These proactive measures help us minimize outages and improve overall reliability for our members.

In February, Burford's Tree will be working in the Princeville areas, Highway 258 North, Batts Chapel Road and other hotspots across the system. Crews will utilize equipment such as the sky trim, bucket trucks, and bush hogs to effectively clear these areas.



Along The LINE

ememc.com

Board of Directors

- Bert Pitt, President
- Jimmie Jernigan, Vice Pres.
- Wayne Harrell, Treasurer
- Norman A. Roberson, Secretary
- Billy Trevathan
- Rejeanor Scott
- Harold Thompson
- Edward B. Simmons, Attorney

CEO

Winston T. Howell

Editor

Monica Speight

Hwy. 33 East, P.O. Box 188
 Tarboro, NC 27886
 252-823-2171 • 1-800-445-6486
 Office Hours: 8 a.m.–5 p.m. (M–F)

After Hours Outage Reporting 1-800-690-0657

Payments after office hours and on holidays can be made at the kiosk under the drive thru canopy, by calling our automated telephone service at

1-844-967-2463, placed in the night deposit box or you may choose to utilize the convenience of online bill-pay by logging on to ememc.com