



Along the LINE

MAY 2025

For members of
Edgecombe-Martin County EMC



Sporting Clay 4-H Fundraiser

Save the date, Edgecombe-Martin County EMC will hold our fourth annual sporting clays 4-H fundraiser on Friday, Sept. 12.

This is a 50-target event. Registration will begin at 9 a.m. Lunch will be provided at the conclusion of the tournament. There will be prizes for 1st through 3rd place for individuals and teams. Gun rental is available.

A maximum of 30 teams will be allowed. Shells are not included in registration fee, but will be available for purchase if needed. 7½-size shot or smaller. Eye and ear protection is required.



Holiday Closing

Edgecombe-Martin County EMC
will be closed on
Monday, May 26, in observance
of Memorial Day.

Edgecombe-Martin County EMC Sporting Clay Fundraiser

WHEN: Friday, September 12th, 2025

WHERE: Rose Hill Sporting Preserve, 3815
Rose Hill Lane, Nashville, NC 27856

BENEFITS: Edgecombe County 4-H

PRICE: \$500.00 for a 4 person team. \$150.00
for individuals

TO REGISTER: Contact Monica Speight at
252-823-2171 or monicas@ememc.com

After-hours and holiday
payments can be made using
the following options:

- Kiosk under the drive-thru canopy
- Calling our automated telephone service at 1-844-967-2463
- Placed in the night deposit box
- Online bill-pay by logging on to **ememc.com**

Welcome Our Newest Team Member!

We are excited to welcome Aubrey Gardner to the Edgecombe-Martin County EMC team! Aubrey joined us in March as our new custodian and has already become a valuable part of our cooperative family.

As a local resident, Aubrey understands the needs of our community and is committed to helping us maintain a safe and welcoming environment for both employees and members. Her dedication and hard work play an essential role in keeping our facilities running smoothly.

Please join us in giving Aubrey a warm welcome! She is excited about her new role and looks forward to meeting and working with our members. If you see Aubrey around, be sure to say hello!



Aubrey Gardner

\$2,000 Awarded in Operation Round Up Grants

Edgecombe-Martin County EMC proudly supports local organizations through our Operation Round Up program. In March, we awarded a total of \$2,000 in grants to nonprofits that directly benefit the communities we serve.

St. Catherine Catholic Church and Bethel Advocacy each received \$500, while Tarboro Community Outreach was awarded \$1,000. These funds will help further their missions and make a positive impact on those in need.

Operation Round Up was established in 2020 as a way to give back to the communities within Edgecombe-Martin County EMC's service area. The program provides financial assistance for initiatives related to economic development, education, emergency services, energy efficiency, and environmental efforts. Funding comes from EMC members who choose to round up their electric bills to the next dollar, with those extra cents adding up to create meaningful change.

Nonprofit organizations that serve Edgecombe-Martin County EMC members are eligible to apply for grants. Applications can be picked up at our office or accessed online at www.ememc.com under the Operation Round Up section. Submitted applications are reviewed by our Board of Directors, who carefully evaluate and distribute funds to organizations making a difference in our communities.

We are grateful for the generosity of our members who participate in Operation Round Up and help make this program a success!



Eddie Stocks presents Operation Round Up grants to (from left to right): Camilla Griggs with Bethel Advocacy Center, Eric Michael from St. Catherine Catholic Church and Mary Ann Czaja from Tarboro Community Outreach.

lines

FROM ENGINEERING AND OPERATIONS SPECIALIST
SAMMY CLARK

May is the time of the year when people want to get in their yards and start planting. Before you plant a tree, look up from where you intend to plant and see if any power lines are overhead or nearby. Then consider what that tree will look like several years from now. It may be hard to imagine, but the small tree you plant today could grow as tall as 100 feet.

We recognize that trees are a vital part of a healthy and vibrant community, providing ecological, aesthetic, and economic benefits. However, trees can grow into power lines, creating hazardous conditions and causing power outages. You can do your part by ensuring the tree you plant is the right tree in the right place.

When planting trees, their location can profoundly impact the integrity of power lines, influencing the reliability and safety of our electrical system. To mitigate potential issues, plant large trees at least 35 to 40 feet away from the center of power lines. This ensures a 10 to 15 feet clearance for mature trees with a sprawling branch span of 40 feet in diameter. Small trees and large shrubs can be planted within 35 feet of power lines, but their height should not exceed 15 feet.

The weather is turning warmer, and spring is just around the corner! Before beginning any landscaping or outdoor projects that require digging, electric co-op members are reminded to call 811 to notify local utilities and have underground pipes and wires marked. The national 811 "Call Before You Dig" phone number links residents to a local call center, which then dispatches local utility companies to mark underground utility lines, pipes, and cables with paint or flags so you know what's below. In North Carolina, residents should call at least 72 hours before beginning to dig. Calling 811 before every project helps save lives, avoid costly penalties from hitting underground lines, and protect infrastructure.

At Edgecombe-Martin County EMC, we strive to balance maintaining beautiful surroundings and ensuring a reliable power supply by keeping power lines clear in rights of way (ROW). While we recognize and appreciate the beauty of trees, there are three main benefits to tree trimming in ROW areas: Safety, Reliability, and Affordability.

From a safety aspect, overgrown vegetation and trees pose a risk to power lines. If trees are touching power lines in our members' yards, they can pose a grave danger to families. If children can access those

trees, they can potentially climb into a danger zone. Electricity can arc, or jump, from a power line to a nearby conductor like a tree. A proactive approach also diminishes the chances of fallen branches or trees during severe weather events that make it more complicated and dangerous for line technicians to restore power.

One of the biggest benefits of a proactive vegetation management program is reliability. Strategic tree trimming reduces the frequency of downed lines causing power outages. Generally speaking, healthy trees don't fall on power lines, and clear lines don't cause problems. Trimming and pruning keep lines clear to promote reliability. At Edgecombe-Martin County EMC, trees are the number one cause of power outages, with 106 incidents in the past year.

As a not-for-profit cooperative, Edgecombe-Martin County EMC strives to keep costs in check to maintain affordable rates. If trees grow too close to power lines, the potential for expensive repairs also increases. Effective tree trimming and other vegetation management efforts keep costs down for everyone.

Our right-of-ways are managed on a four-year rotation, allowing us to continually address vegetation growth across our entire distribution and transmission systems. A large part of our distribution system right-of-way is pruned using bucket trucks and personnel trained in cutting around power lines. This same method is used for trimming around service drops on a member's property. Additionally, we utilize sky trimming equipment for difficult terrain and selective herbicide spraying to reduce the need for cutting and mowing in specific areas.

Investing in right-of-way maintenance is not just about keeping the landscape tidy—it's a strategic effort to ensure a safe, reliable, and resilient power supply. By understanding the costs involved and the direct impact on preventing outages, we can make informed decisions that benefit both the co-op members and the communities we serve.

Cooperatively,

Sammy Clark

Sammy Clark

Protect Your Equipment with Three-Phase Protection

For members with three-phase power, ensuring proper protection for your equipment is essential. A loss of one phase—commonly referred to as “single phasing”—can cause serious damage to motors and other machinery if not properly safeguarded. Without the right protection, motors may continue running with reduced power, leading to overheating, equipment failure, and costly repairs.

Installing a three-phase monitoring and protection system can help prevent these issues. These devices detect when a phase is lost and

automatically shut down the motor or equipment before damage occurs. This is especially important for farms, businesses, and industrial operations that rely on three-phase motors for essential operations.

By investing in three-phase protection, you can help prevent unexpected downtime and expensive repairs, ensuring your equipment remains safe and operational. If you're unsure whether your system is adequately protected, consult with an electrician or equipment specialist to explore the best options for your needs.



For more information, feel free to reach out to Edgecombe-Martin County EMC. We're here to help you safeguard your electrical systems and maintain reliable power for your operations!

Accepting Sealed Bids

Edgecombe-Martin County EMC is accepting sealed bids for a Farmtrac FT535 tractor from May 1 – May 31. This bid includes a Bush Hog, Two-Point Plow, Boom, Box Blade, and Fuel Tank. Bids can be submitted in person or by mail to P.O. Box 188, Tarboro, NC 27886. If you have any questions or need additional details, please contact Alex Tucker at 252-641-9511 or alext@ememc.com. Don't miss this opportunity—submit your bid before the deadline!



Along The LINE

ememc.com

Board of Directors

Bert Pitt, President
Jimmie Jernigan, Vice Pres.
Wayne Harrell, Treasurer
Norman A. Roberson, Secretary
Billy Trevathan
Rejeanor Scott
Harold Thompson
Edward B. Simmons, Attorney

CEO

Winston T. Howell

Editor

Monica Speight

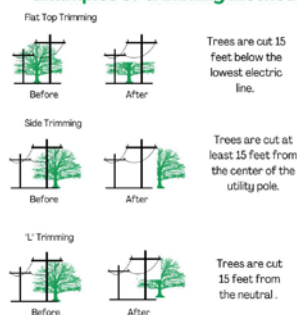
Hwy. 33 East, P.O. Box 188
Tarboro, NC 27886
252-823-2171 • 1-800-445-6486
Office Hours: 8 a.m.–5 p.m. (M–F)

May Rights-of-Way Schedule

In order to provide safe, affordable, and reliable electrical service, we maintain the rights-of-way under and around our power lines. We do this through rights-of-way and vegetation management. This requires pruning, removing, and cutting brush to prevent vegetation from interrupting your electric service.

Throughout May, Burford's Tree will utilize the sky trim, buckets and bushhogging equipment, in the Tarboro area, Highway 33, Shiloh farm road, and various hotspots on the system.

Examples of trimming methods



Edgecombe-Martin County
Electric Membership Corporation
A Touchstone Energy Cooperative