



Along the LINE

October 2025

For members of
Edgecombe-Martin County EMC

Planting Success: Edgecombe-Martin's Sharing Success Grant Helps Bring No-Till Drill to Community

Every year, Edgecombe-Martin County EMC partners with CoBank through its Sharing Success grant program to support projects that strengthen our communities. The program doubles the impact of contributions by matching funds, allowing cooperatives like ours to help local organizations make meaningful investments. Last year, Edgecombe-Martin awarded a \$3,000 Sharing Success grant, which CoBank matched with another \$3,000, providing a total of \$6,000 to Edgecombe County Soil and Water.



Those funds were used to purchase a Greenscape 750-4 Food Plotter no-till seed drill, which is now available for rent by landowners and community members. This farm implement is designed for planting food plots for wildlife—such as deer—and for high-precision pasture seeding, particularly in the fall. Because it's a no-till drill, it can seed directly into existing vegetation or prepared ground without the need to plow or till the soil, saving both time and resources while helping protect soil health.

The Greenscape 750-4 is equipped with three seed boxes: one large box for row crops like soybeans, one small box for clovers and other legumes, and a native grass seed box for species such as tall fescue and other warm-season grasses. The drill can be rented at a rate of \$15 per acre for up to seven calendar days at a time, and it is available exclusively for land within Edgecombe County.

At Edgecombe-Martin County EMC, we are proud to help bring resources like this to the community. Supporting the purchase of the no-till drill not only helps lower right-of-way management costs, but it also

promotes environmental stewardship by encouraging practices that improve soil health and protect natural resources. By working together through programs like Sharing Success, we can support agriculture, encourage sustainable practices, and strengthen rural life for years to come. For rental inquiries, contact the Edgecombe County Soil and Water office at 252-823-8187 ext. 3 or visit them at 201 St. Andrew St., Room 255, Tarboro, NC 27886.



Edgecombe-Martin County
Electric Membership Corporation
A Touchstone Energy Cooperative

Operation Round Up Applications Open

Edgecombe-Martin County EMC is now accepting applications for our Operation Round Up program grants.

Through this program, members voluntarily round up their bills to the next dollar, with the extra cents funding local grants that support education, emergency responders, community needs and more. Individually, it's only pennies—averaging about \$6 a year per member—but together, these contributions make a lasting impact in our communities.

Organizations serving EMEMC members are invited to apply for grants of up to \$1,000. Applications will not be accepted for general operating expenses, tax or payroll expenses, political causes, lobbying, or advertising. To apply, organizations can pick up an

application at the Edgecombe-Martin County EMC office or download it from our website at ememc.com. Completed applications must be submitted to Monica Speight, either in person at 679 Hwy 33 East, Tarboro, NC, online at our website, or by mail to EMEMC, Attention Monica Speight, P.O. Box 188, Tarboro, NC 27886. All applications are reviewed by members of the EMEMC Board of Directors, who will make specific recommendations and awards based on the applications received.

We encourage all eligible organizations to apply and join us in turning small change into



Eddie Stocks presenting one of our last Operation Round Up grants to Camilla Griggs from Bethel Advocacy Center.

big community benefits. For members who wish to sign up for Operation Round Up, email a member service representative at memberservices@ememc.com or call 252-823-2171. Even after you are signed up for Operation Round Up, you can opt-out of the program at any time by contacting Edgecombe-Martin County EMC. Your small change can make a big difference!

Attend Member Appreciation Day: Wednesday, Oct. 8, 2025

We look forward to celebrating you — our members — at this year's Member Appreciation Day! Mark your calendars to join us on Wednesday, Oct. 8, from 11 a.m. to 2 p.m. in the truck shed for an afternoon filled with good food, fellowship and fun.

We'll be serving hot dogs and homemade ice cream, and our employees will be on hand to greet you, answer questions and share in the celebration. While you're here, don't forget to pick up your brand-new 2025 calendar and enter our special drawing for bill credits — just for stopping by!



Member Appreciation Day is one of our favorite traditions, because it's all about saying thank you. At Edgecombe-Martin County EMC, we are proud to serve a community that supports and values its cooperative. This event is a small way for us to show how much we appreciate the trust you place in us each and every day.

We hope you'll come out, enjoy the food and fellowship, and help us celebrate the cooperative spirit. We can't wait to see you here!

Celebrating National Cooperative Month

October is National Cooperative Month — a time to recognize and celebrate the unique role cooperatives play in communities across our state and nation. For Edgecombe-Martin County EMC, this month is an opportunity to highlight what sets us apart from other utilities and to thank you, our members, for allowing us to serve you.

As a cooperative, we operate under a different business model than investor-owned utilities. We don't have shareholders who live elsewhere or investors expecting profits. Instead, we are owned by the very people we serve — you, our members. This structure ensures that every decision we make is guided by what is best for our members and our communities, not outside interests. Our focus remains on providing safe, reliable, affordable electricity while also working to improve the quality of life in our service area.

The cooperative difference is rooted in the Seven Cooperative Principles: Voluntary and Open Membership; Democratic Member Control; Members' Economic Participation; Autonomy and Independence; Education, Training and Information; Cooperation Among Cooperatives; and Concern for Community. These principles have guided electric cooperatives for decades and continue to shape how we serve today. They also reflect the values we strive to uphold every day — honesty, fairness, transparency, and service.

Membership in a cooperative comes with meaningful benefits. You are more than just a customer — you are an owner. That means you have a voice in how the cooperative is run, including the opportunity to elect directors to represent you, or even serve on the board yourself. It also means that when revenues exceed expenses, those margins are returned to you in the form of capital credits. This is a tangible reminder that your cooperative exists to serve you, not to generate profit.

Because we are a local organization, our connection to the community runs deep. Our employees live and work alongside you, and we are invested in the same schools, neighborhoods, and businesses that you are. That local connection drives us to go beyond simply delivering power. We are



proud to support economic development initiatives that bring jobs and opportunity to our area, and we actively invest in programs like the Bright Ideas education grants and the NC Youth Tour, which give local students and teachers new opportunities to grow and succeed.

At the same time, we are part of a larger network of North Carolina's 26 electric cooperatives. By working together, we are able to achieve more than we could alone — from strengthening our electric grid to expanding broadband access and exploring innovative energy solutions that will help power the future. These collaborations ensure that we can continue to provide the reliable service you depend on while keeping costs affordable and looking ahead to tomorrow's needs.

As we celebrate National Cooperative Month, I want to thank you for the trust you place in Edgecombe-Martin County EMC. Your membership is at the heart of everything we do, and we are honored to serve you — not just this month, but every day of the year.

Cooperatively Yours,
Winston Howell
Winston Howell

Electric Cooperative Youth Tour: A Life-Changing Experience for Students

Each year, the Electric Cooperative Youth Tour opens doors for high school students to experience Washington, D.C., in a way unlike any other.

Next summer, one student sponsored by Edgecombe-Martin County EMC will join more than 1,500 peers from across the country for a week of leadership development, education, and adventure in our nation's capital.

During the tour, delegates gain a deeper understanding of the cooperative business model, American history, and the role of government. Students will visit historic sites and monuments, meet with congressional leaders and see firsthand how public policy is shaped. The Youth Tour also offers unique networking opportunities, connecting participants with alumni who have gone on to serve as Capitol Hill staffers, interns, and even elected officials.

This experience is open to current high school juniors (rising seniors) who are ready to take on a leadership opportunity that can inspire their future.

For more details or to apply, please contact Monica Speight at 252-823-2171 or monicas@ememc.com.



Seth Hartley served as Edgecombe-Martin County EMC's 2025 Youth Tourist

Along The LINE

ememc.com

Board of Directors

Bert Pitt, President
Jimmie Jernigan, Vice Pres.
Wayne Harrell, Treasurer
Norman A. Roberson, Secretary
Billy Trevathan
Rejeanor Scott
Harold Thompson
Edward B. Simmons, Attorney

CEO

Winston T. Howell

Editor

Monica Speight

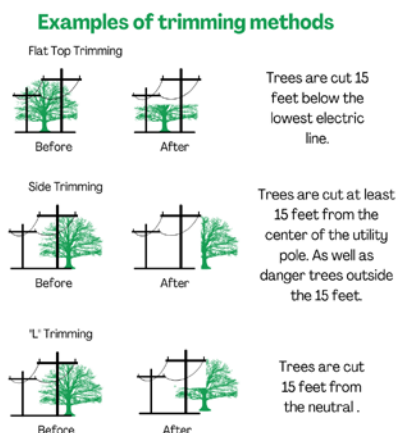
Hwy. 33 East, P.O. Box 188
Tarboro, NC 27886
252-823-2171 • 1-800-445-6486
Office Hours: 8 a.m.–5 p.m. (M–F)

After Hours Outage Reporting 1-800-690-0657

Payments after office hours and on holidays can be made at the kiosk under the drive thru canopy, by calling our automated telephone service at 1-844-967-2463, placed in the night deposit box or you may choose to utilize the convenience of online bill-pay by logging on to ememc.com

October Rights-of-Way

In order to provide safe, reliable electrical service, we maintain the rights-of-way under and around our power lines. We do this through rights-of-way and vegetation management. This requires pruning, removing and cutting vegetation to prevent interruption of your electric service.



Throughout October, Burford's Tree Service will utilize sky trim, bucket trucks, and bush hogging equipment in the Battleboro, Whitakers, Seven Bridges road areas, and various hotspots within the system.